

# ST-3 XT3

TRANSFORMER RATED  
WIRELESS SITE TESTER

## Connection Guidelines



# ST-3/XT3 Connection Guidelines



It is essential that operators thoroughly read the User Guide before putting this product into service.

## Installing the ST-3/XT3

Follow the procedure described in the *Installation of the ST-3/XT3* section of the product's User Guide.

**REMINDER:** Be sure to configure the removable twist tabs and set the Form Selector switch according to the meter base form you are testing.

Insert the ST-3/XT3 into the meter base and turn the device on using the ON/OFF switch.

## Connecting to the ST-3/XT3 with a mobile device



- 1 To connect, open the **Probewell Connect** application on your mobile device.
- 2 Scan the QR code on the device for first use.

## Connecting to the ST-3/XT3 with a computer



- 1 To connect, go to Windows Settings, Select *Network & Internet*.
  - A. Click on *Show available networks*.  
(**Tip:** Shortcut often located on the bottom right of your screen)
  - B. Locate the socket SSID in the list of available networks.
  - C. When connecting to a socket's network for the first time, input the SSID name as the security key.  
(i.e., **PW-XT3-{S/N}-AP**).

**Note:** Once the connection process has been completed, the socket's SSID will appear on the network list in future sessions.



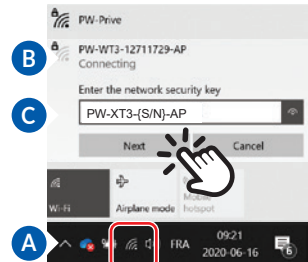
- 2 Open the **Probewell Connect\*\*** application on your computer.

**Note:** The device only allows one user to connect at a time.

Download the **Probewell Connect** mobile application



Minimum system requirements:  
iOS 11 or Android 7\*



\* Probewell Lab Inc. cannot control nor be held responsible for compatibility issues resulting from mobile phone manufacturers' non-compliance with current firmware and/or operating system standards.

\*\* To download and install the Probewell Connect app for Windows (system requirement: Windows 10), visit [www.probewell.com/pw-connect](http://www.probewell.com/pw-connect).

Version 1.1