



# Power Quality Report

## Site mysiteid Info

### Socket

Form: 9S  
 Wiring: Wye  
 Longitude: N/A  
 Latitude: N/A  
 Altitude: N/A

### CT

Ratio: 400.00 A : 5.00 A  
 Max burden: 1.00 Ohm  
 Accuracy: 0.15 %  
 Acc. model: N/A  
 Acc. serial: N/A

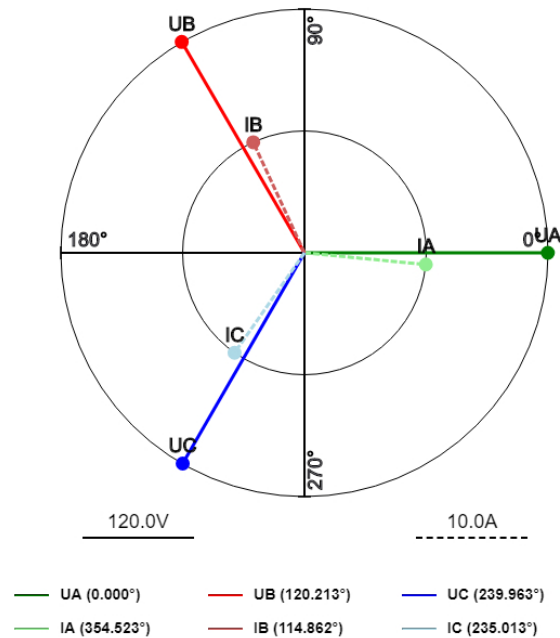
### PT

Ratio: 120.00 V : 120.00 V  
 Max burden: 5.00 VA  
 Accuracy: 2.00 %  
 Acc. model: N/A  
 Acc. serial: N/A

## PQ Measurements

	A	B	C	Unit
<b>U</b>	119.9	120.136	119.8	V
<b>I</b>	5.007	4.999	5.004	A
<b>P</b>	601.1	599.4	600.5	W
<b>Q</b>	0.299	0.300	0.300	VAR
<b>S</b>	600.8	599.2	599.1	VA
<b>Angle U</b>	0.000	120.2	240.0	°
<b>Angle I</b>	354.5	114.9	235.0	°
<b>PF</b>	0.999	0.999	1.001	-
<b>THD U</b>	0.260	0.260	0.260	%
<b>THD I</b>	1.117	1.116	1.116	%
<b>Freq</b>	60.04	59.98	60.11	Hz

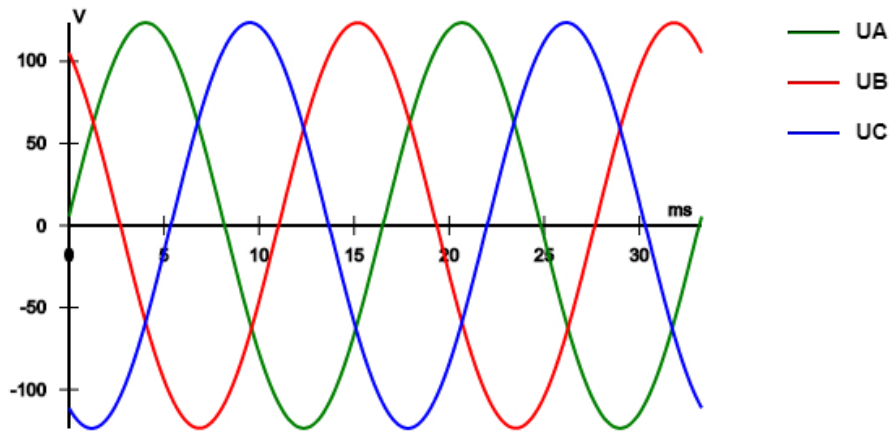
## Vector Diagram



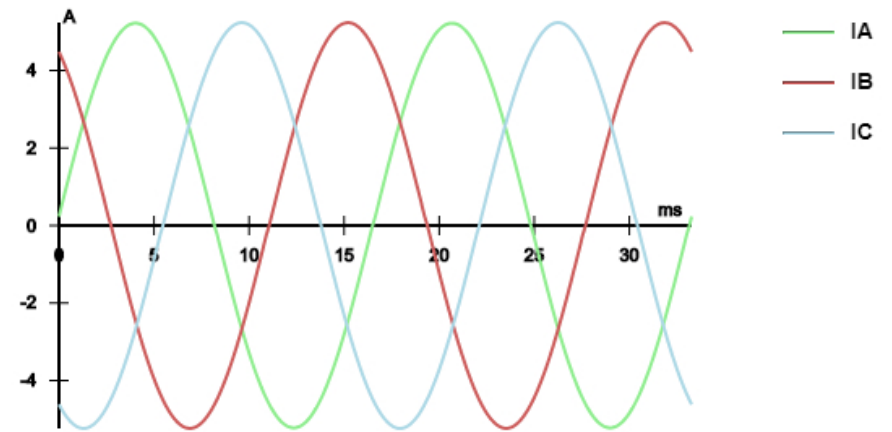
U Order: ABC

I Order: BCA

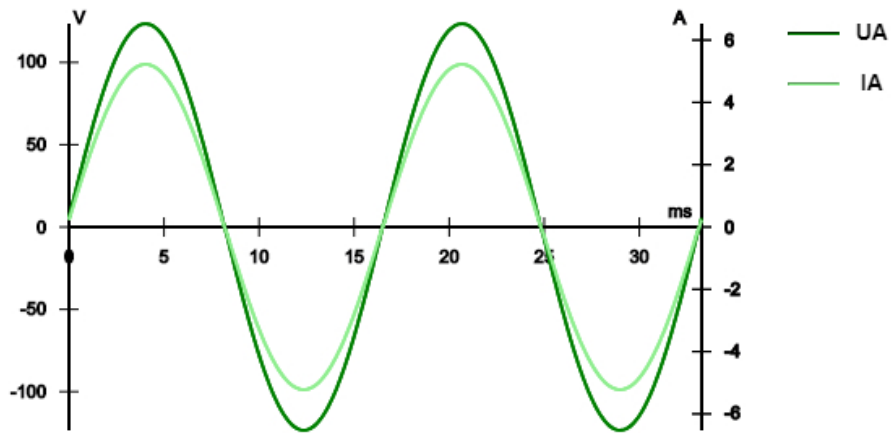
Time - Voltage



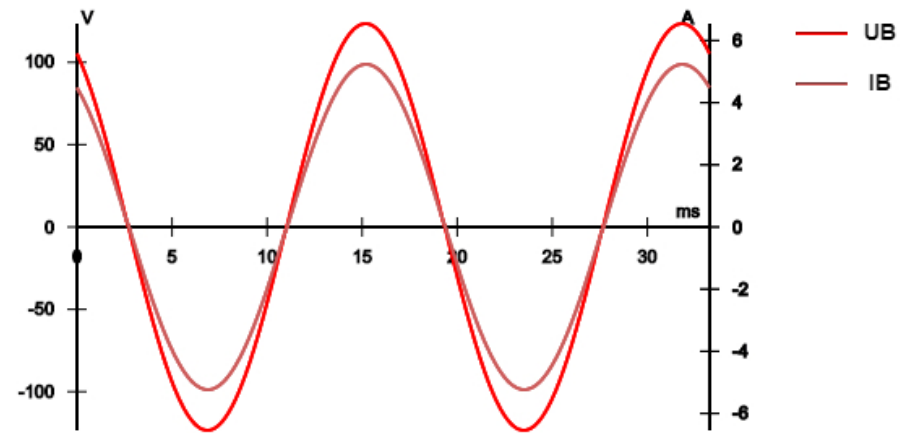
Time - Amperage



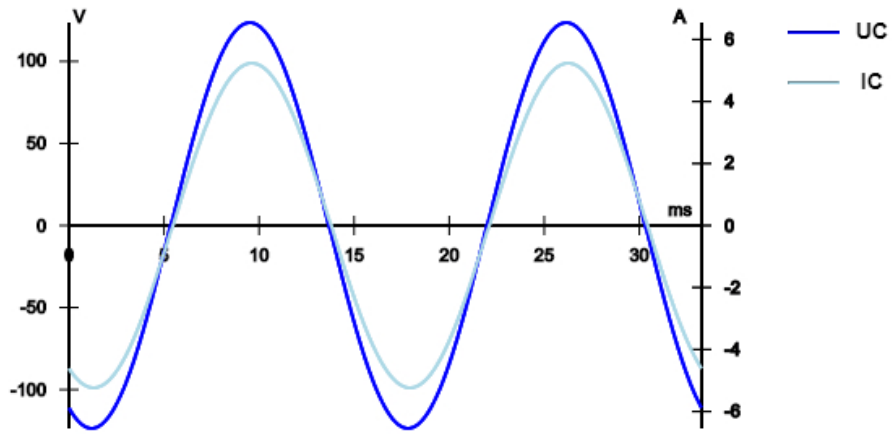
Time - Phase A



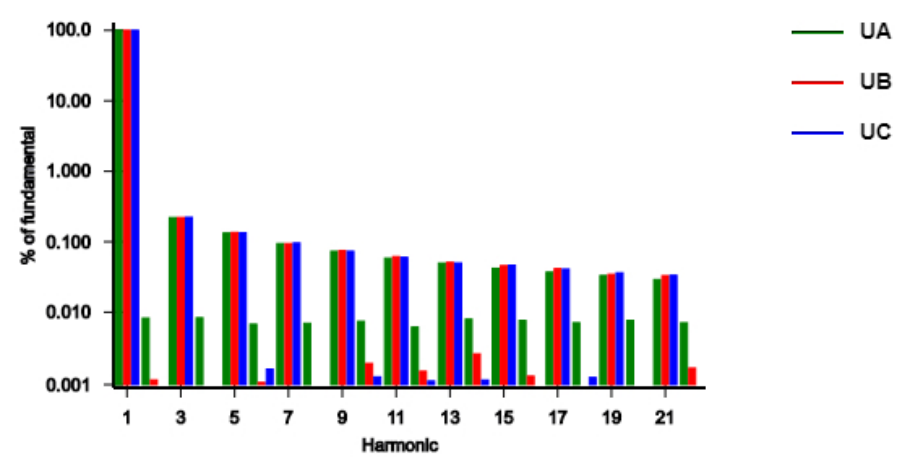
Time - Phase B



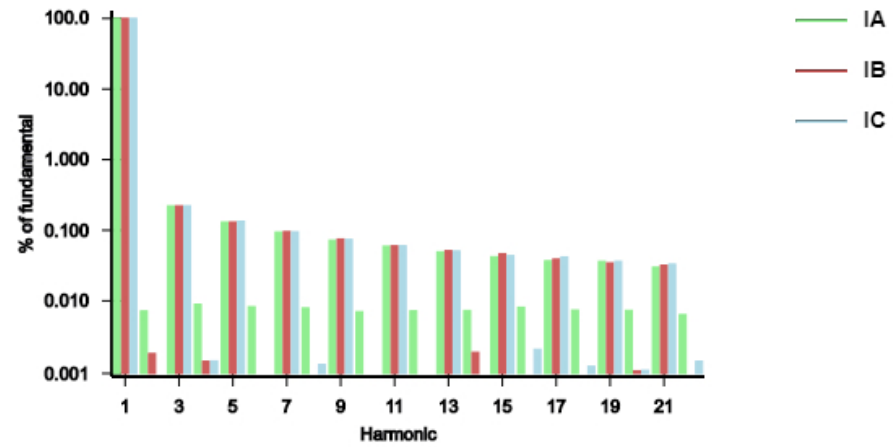
### Time - Phase C



### Harmonic - Voltage



### Harmonic - Amperage



Harmonic - Voltage (% of fundamental)

	1	2	3	4	5	6	7	8	9	10	11	12	13	14	15	16	17	18	19	20	21	22
<b>UA</b>	100	0.008	0.220	0.008	0.133	0.007	0.094	0.007	0.073	0.007	0.058	0.006	0.050	0.008	0.042	0.008	0.037	0.007	0.033	0.008	0.029	0.007
<b>UB</b>	100	0.001	0.220	0.001	0.135	0.001	0.094	0.001	0.075	0.002	0.061	0.002	0.051	0.003	0.046	0.001	0.041	0.001	0.034	0.001	0.033	0.002
<b>UC</b>	100	0.001	0.222	0.001	0.134	0.002	0.096	0.001	0.073	0.001	0.060	0.001	0.050	0.001	0.046	0.001	0.041	0.001	0.036	0.001	0.033	0.001

Harmonic - Amperage (% of fundamental)

	1	2	3	4	5	6	7	8	9	10	11	12	13	14	15	16	17	18	19	20	21	22
<b>IA</b>	100	0.007	0.220	0.009	0.130	0.008	0.094	0.008	0.072	0.007	0.059	0.007	0.049	0.007	0.042	0.008	0.037	0.007	0.036	0.007	0.030	0.006
<b>IB</b>	100	0.002	0.221	0.001	0.130	0.001	0.096	0.001	0.075	0.001	0.060	0.001	0.051	0.002	0.046	0.001	0.039	0.001	0.034	0.001	0.032	0.001
<b>IC</b>	100	0.001	0.221	0.001	0.134	0.001	0.095	0.001	0.074	0.001	0.060	0.001	0.051	0.001	0.043	0.002	0.042	0.001	0.036	0.001	0.033	0.001

## User-defined questions

q1?	a1
q2?	a2
q3?	a3