

The Probewell NTDataOne option is the latest addition to the already versatile MT-1/NT portable wathrou meter tester. With this option, your MT-1/NT will now be able to store and transfer all test results as well as answers to your personalized set of questions.

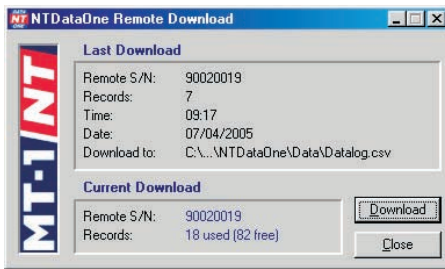


## FEATURES

- Stores up to 100 test results -
- Transfers results to PC as a text file (.CSV) -
- Can program up to 8 personal questions -
- USB technology -
- Auto-launch of software on PC -
- Manages files on any data management software - (MS EXCEL, MS ACCESS, more)
- Uploads data to existing databases -
- No training required -

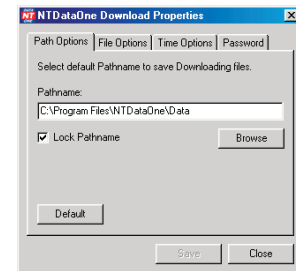
## REMOTE DOWNLOAD

Using USB technology, the NTDataOne Remote Download window is automatically started when the MT-1/NT handheld remote is connected to the PC. To minimize training of field personnel, this window is kept separate from the configuration side of the software and download is activated by pressing a single key - DOWNLOAD.



## DOWNLOAD PROPERTIES

All NTDataOne PC configurations are programmed in a separate, password-protected, software window. Programmers can preset path names, file names and also determine actions to take in the case of saving to an existing file name: Cancel, Append or Overwrite.

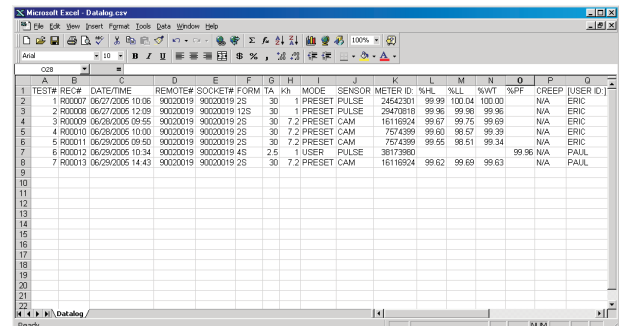
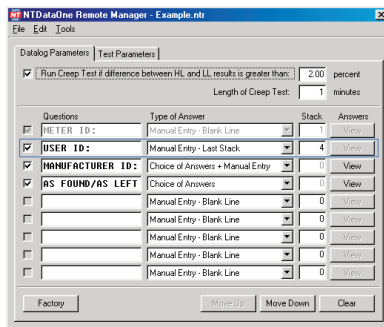


## REMOTE MANAGER

The strength of the new NTDataOne option is the possibility it gives the user to enter additional data in the field, directly from the MT-1/NT's new handheld remote. The NTDataOne software allows programmers to configure in seconds up to 8 different questions to be answered in the field by meter technicians. Furthermore, all regular test results can be configured from this window and downloaded to each individual remote, thus saving tremendous time in manual configurations.

## DATA MANAGEMENT

The NTDataOne option transfers stored data to a PC as a text file format (.CSV). This format can then be transferred to any data management software. The main advantage of using .CSV files is that column width can be automatically set in seconds. DATA CAN BE VIEWED ON EXCEL ONLY SECONDS AFTER COMING IN FROM THE FIELD. In addition to standard test results and answers to personalized questions, the NTDataOne option automatically transfers such fields as: Standard's serial number, remote serial number, meter forms, Kh, and much more.



WETHER IN SAMPLING PROGRAMS OR HIGH BILL COMPLAINTS, TIME SAVED IN DATA ENTRY AND ERROR MANAGEMENT WILL ONLY HELP TO IMPROVE YOUR METER DEPARTMENT'S EFFICIENCY.